
PARTS BOOK

KM-817/827

HIGH SPEED POST BED NEEDLE FEED
LOCK STITCH MACHINE

KM-816/826

HIGH SPEED POST BED DROP FEED
LOCK STITCH MACHINE



PME-051117

SUNSTAR MACHINERY CO., LTD.

MODEL

- **KM-817**
HIGH SPEED POST BED 1-NEEDLE, NEEDLE FEED LOCK STITCH MACHINE
- **KM-827**
HIGH SPEED POST BED 2-NEEDLE, NEEDLE FEED LOCK STITCH MACHINE
- **KM-816**
HIGH SPEED POST BED 1-NEEDLE, DROP FEED LOCK STITCH MACHINE
- **KM-826**
HIGH SPEED POST BED 2-NEEDLE, DROP FEED LOCK STITCH MACHINE

CONTENTS

목 차

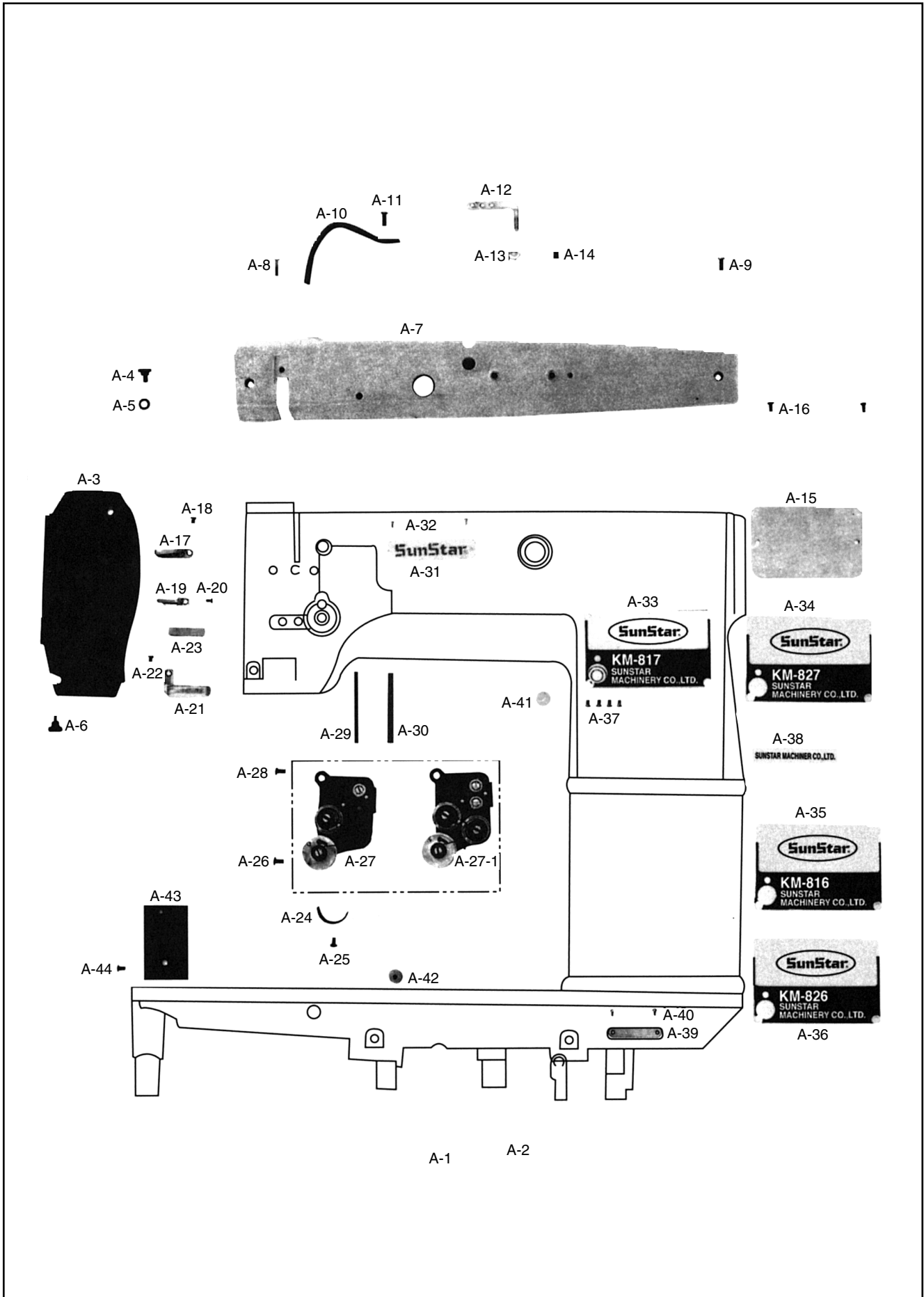
A	<i>Machine Body & Threading Mechanism</i> 외장 및 실장력 조절 관계.....	4
B	<i>Upper Shaft Mechanism</i> 상축 관계.....	6
C	<i>Needle Bar Rocking Mechanism</i> 바늘대 요동 관계.....	8
D	<i>Presser Foot & Knee Lifting Mechanism</i> 노루발 및 무릎올림 관계	10
E	<i>Feed Mechanism</i> 피이드 관계	12
F	<i>Post & Hook Mechanism</i> 포스트 및 훅 관계.....	14
G	<i>Lubrication</i> 급유 관계.....	16
H	<i>Lower Shaft Mechanism</i> 하축 관계.....	18
I	<i>Accessories</i> 액세서리	20
J	<i>Gauge Parts</i> 게이지 관계	21

NOTE : Parts are Subject to Change in Design Without Prior Notice.

본 책자는 Parts Book으로 제작되었으므로 메뉴얼로 사용 불가합니다.
This is a parts book. It cannot be used as a manual.

A

Machine Body & Threading Mechanism 외장 및 실장력 조절 관계

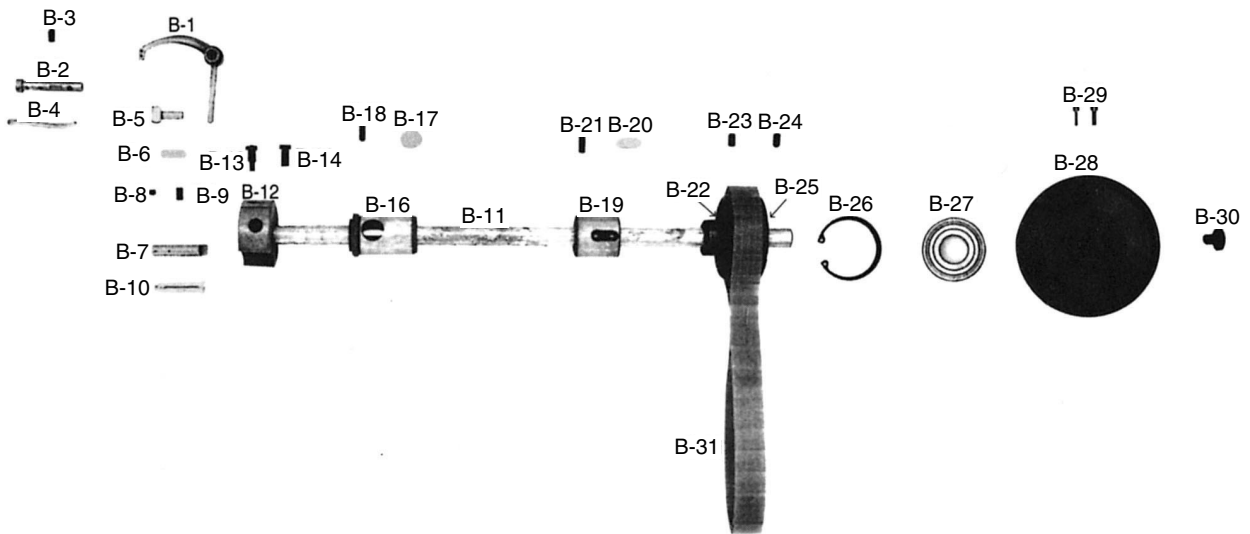




Ref. No.	Parts No.	Name of Parts	품 명	Q' ty				비 고
				KM-817	KM-827	KM-816	KM-826	
A-1	01-001A-8270	Arm, Arm Base, Bed Assembly	아암, 아암 받침, 베드(組)	1(Set)	1(Set)			
A-2	01-001A-8260	Arm, Arm Base, Bed Assembly	아암, 아암 받침, 베드(組)			1(Set)	1(Set)	
A-3	01-006A-7400	Face Plate	면판	1	1	1	1	
A-4	01-008S-7400	Screw(U) For A-3	면판 죄나사(상)	1	1	1	1	
A-5	01-007W-7400	Washer(U) For A-3	면판 와셔	1	1	1	1	
A-6	SC-0322-7400	Screw (9/64" n=40)	면판 죄나사(하)(9/64" n=40)	1	1	1	1	
A-7	01-011A-7400	Top Cover	윗뚜껑	1	1	1	1	
A-8	SC-0178-7400	Screw (11/64" n=40)	윗뚜껑 죄나사(좌)(11/64" n=40)	1	1	1	1	
A-9	01-013S-7400	Screw (11/64" n=40)	흡블이 둥근납작 작은나사(11/64" n=40)	1	1	1	1	
A-10	01-010C-7400	Thread Take-Up Cover	실채기 커버	1	1	1	1	
A-11	SC-0171-2302	Screw (11/64" n=40)	지그자그 브라켓 카바나사(11/64" n=40)	1	1	1	1	
A-12	01-015A-7400	Top Cover Thread Guide	세구멍 실걸이	1	2	1	2	
A-13	SN-0121-7400	Nut (15/64" n=28)	세구멍 실걸이 너트(15/64" n=28)	1	2	1	2	
A-14	SC-0114-1230	Screw (15/64" n=28)	실채기 힌지핀 나사(15/64" n=28)	1		1		
A-15	01-014C-7400	Rear Cover	뒷뚜껑	1	1	1	1	
A-16	SC-0502-2302	Screw (9/64" n=40)	윗뚜껑 고정판 고정나사(대) (9/64" n=40)	2	2	2	2	
A-17	01-021C-7400	Arm Thread Guide(U)	실걸이(上)	1	1	1	1	
A-18	SC-0519-2302	Screw (9/64" n=40)	마크 죄나사(9/64" n=40)	1	1	1	1	
A-19	01-022C-7400	Arm Thread Guide(M)	실걸이(下)	1	1	1	1	
A-20	SC-0519-2302	Screw (9/64" n=40)	마크 죄나사(9/64" n=40)	1	1	1	1	
A-21	01-023C-7400	Arm Thread Guide(L)	윗실 헬트잡이	1	1	1	1	
A-22	SC-0519-2302	Screw (9/64" n=40)	마크 죄나사(9/64" n=40)	1	1	1	1	
A-23	01-024M-7400	Felt For Upper Thread Supply	윗실 급유 헬트	1	1	1	1	
A-24	01-019C-7400	Stopper For Upperad Take-Up Spring	실조절 장치 스톱퍼	1	1	1	1	
A-25	SC-0531-2302	Screw (9/64" n=40)	톱 카바 고정판 고정나사(소)(9/64" n=40)	1	1	1	1	
A-26	SC-0543-2302	Screw (11/64" n=40)	톱 카바 힌지 고정나사(11/64" n=40)	1	1	1	1	
A-27	01-004A-8170	Thread Tension Control Assembly	실조절 장치(조)	1		1		
A-27-1	01-018A-7400	Thread Tension Control Assembly	실조절 장치(조)		1		1	
A-28	SC-0543-2302	Screw (11/64" n=40)	톱 카바 힌지 고정나사(11/64" n=40)	1	1	1	1	
A-29	01-026C-7400	Tension Release Bar	실 늦추기 축	1	1	1	1	
A-30	01-025C-7400	Pipe For A-29	동 파이프	1	1	1	1	
A-31	01-039M-3710	Brand Mark	브랜드 마크	1	1	1	1	
A-32	01-035P-7400	Pin For A-31	번호판 핀	2	2	2	2	
A-33	01-006M-8170	Model Mark (KM-817)	기종마크	1				
A-34	01-009M-8270	Model Mark (KM-827)	기종마크		1			
A-35	01-006M-8160	Model Mark (KM-816)	기종마크			1		
A-36	01-004M-8260	Model Mark (KM-826)	기종마크				1	
A-37	SC-0519-2302	Screw (9/64" n=40)	마크 죄나사(9/64" n=40)	4	4	4	4	
A-38		Maker Mark	측면마크	1	1	1	1	
A-39	01-034M-7400	Machine Number Plate	번호판	1	1	1	1	
A-40	01-035P-7400	Pin For A-39	번호판 핀	2	2	2	2	
A-41	06-001C-7400	Rubber Cap	피이드 조절기 구멍 마개	1	1	1	1	
A-42	01-007R-8130	Oil Cap	고무마개 (Hole)	1	1	1	1	
A-43	01-006A-8270	Slide Plate	각판	1	1	1	1	
A-44	SC-0501-2302	Screw (11/64" n=40)	실채기 카바 나사(11/64" n=40)	1	1	1	1	

B

Upper Shaft Mechanism 상축 관계



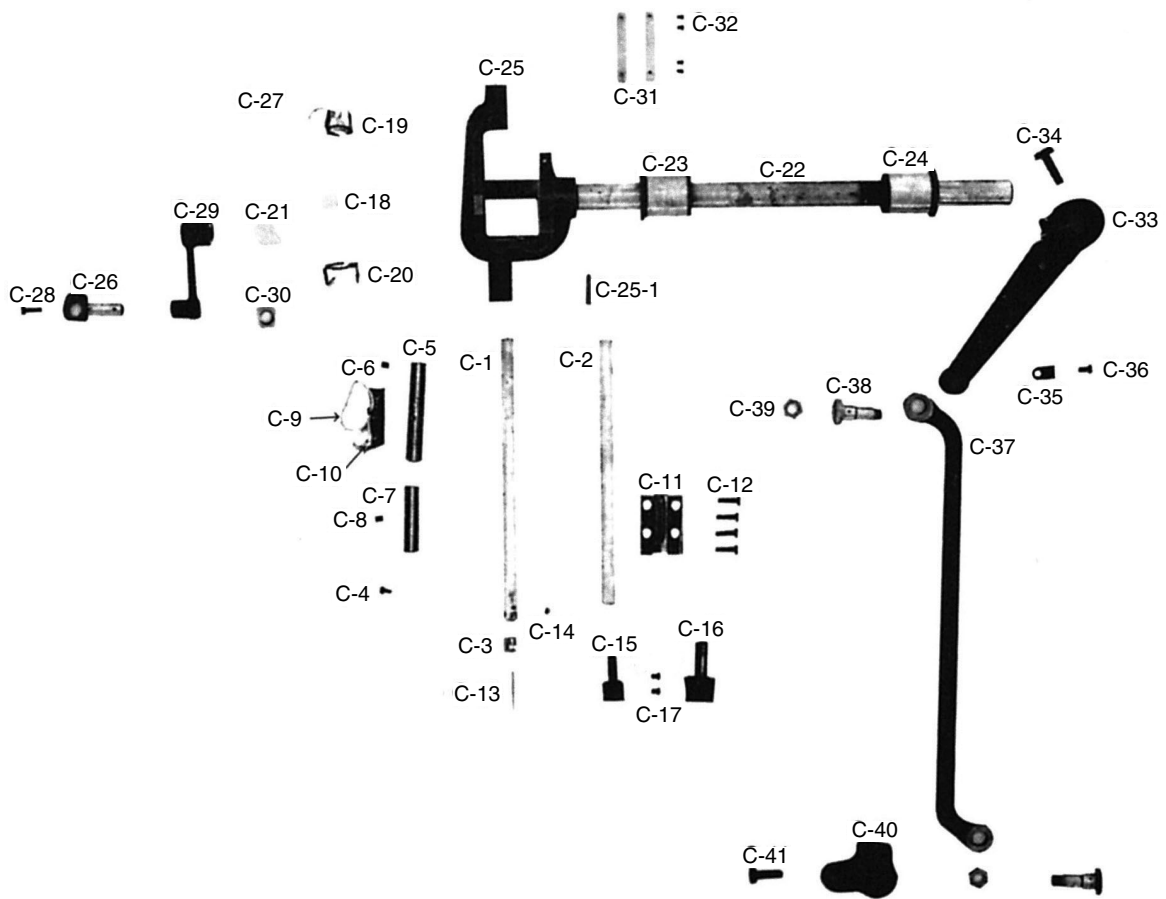


Ref. No.	Parts No.	Name of Parts	품 명	Q' ty				비 고
				KM-817	KM-827	KM-816	KM-826	
B-1	02-104A-8270	Thread Take-Up Lever	실채기	1	1	1	1	
B-2	02-001P-7400	Hinge Pin For Thread Take-Up Lever	실채기 핀	1	1	1	1	
B-3	SC-0507-1230	Screw (15/64" n=28)	상축 붓싱 고정나사(15/64" n=28)	1	1	1	1	
B-4	44-0000-1230	Oil Wick	유심	1	1	1	1	
B-5	02-103A-7400	Take-Up Lever Holder	실채기 잡이	1	1	1	1	
B-6	06-033M-7400	Wick For B-5	절환기 헬트	1	1	1	1	
B-7	PN-000277-00	Take-Up Lever Holder	실채기 잡이	1	1	1	1	
B-8	SC-A550-4517	Screw (1/4" n=40)	흡블이 멈춤나사(1/4" n=40)	1	1	1	1	
B-9	SC-A308-4517	Screw (1/4" n=40)	육각구멍블이 멈춤나사(1/4" n=40)	1	1	1	1	
B-10	44-0000-1230	Oil Wick	유심	1	1	1	1	
B-11	02-110A-7400	Upper Shaft	상축	1	1	1	1	
B-12	02-105A-7400	Link Cam	링크캠	1	1	1	1	
B-13	SC-0123-1230	Screw (9/32" n=28)	링크캠 점나사(9/32" n=28)	1	1	1	1	
B-14	SC-0124-7400	Screw (9/32" n=28)	상축 앞 붓싱 고정나사(9/32" n=28)	1	1	1	1	
B-16	02-108A-7400	Upper Shaft Bushing (F)	상축 앞 붓싱	1	1	1	1	
B-17	02-009M-7400	Felt For B-16	상축 앞 붓싱 헬트	1	1	1	1	
B-18	SC-0514-7400	Screw (15/64" n=28)	상축 붓싱 고정나사(15/64" n=28)	1	1	1	1	
B-19	02-111A-7400	Upper Shaft Bushing (M)	상축 중붓싱	1	1	1	1	
B-20	02-012M-7400	Felt For B-19	상축 중붓싱 헬트	1	1	1	1	
B-21	SC-0507-1230	Screw (15/64" n=28)	상축 붓싱 고정나사(15/64" n=28)	1	1	1	1	
B-22	02-002A-8270	Timing Belt Pulley (U)	타이밍 풀리(상)	1	1	1	1	
B-23	SC-A308-4517	Screw (1/4" n=40)	육각구멍블이 멈춤나사(1/4" n=40)	1	1	1	1	
B-24	SC-A117-4417	Screw (1/4" n=40)	육각구멍블이 멈춤나사(1/4" n=40)	1	1	1	1	
B-25	02-015C-7400	Side Ring	후렌치	2	2	2	2	
B-26	02-018G-7400	Stop Ring (C)	베어링 스냅링(47)	1	1	1	1	
B-27	02-019A-7400	Bearing (6204ZZ)	6204 베어링	1	1	1	1	
B-28	02-003A-8270	Pulley	풀리	1	1	1	1	
B-29	SC-0150-2500	Screw (15/64" n=28)	풀리 고정나사(15/64" n=28)	2	2	2	2	
B-30	SC-0188-1230	Screw (5/16" n=24)	풀리 큰나사(5/16" n=24)	1	1	1	1	
B-31	02-001A-8270	Timing Belt	타이밍 벨트	1	1	1	1	



Needle Bar Rocking Mechanism

바늘대 요통 관계



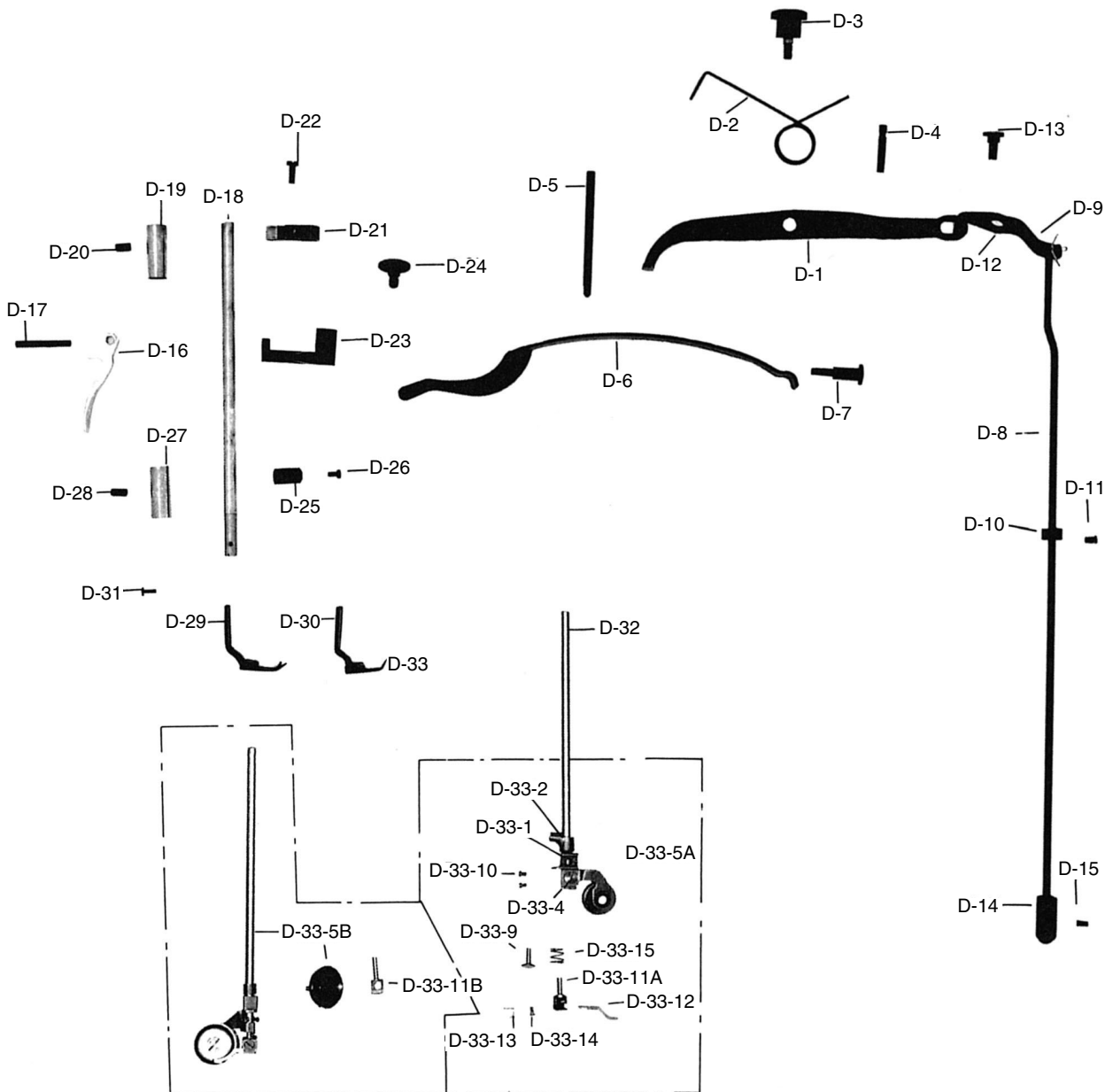


Ref. No.	Parts No.	Name of Parts	품명	Q' ty				비고
				KM-817	KM-827	KM-816	KM-826	
C-1	04-101A-8170	Needle Bar	바늘대	1		1		
C-2	04-101A-7500	Needle Bar	바늘대		1	1	1	
C-3	GP-011730-00	Needle Bar Thread Guide	바늘대 실결이	1		1		
C-4	SC-0125-5607	Screw (3/32" n=56)	바늘대 실안내 쥘나사(3/32" n=56)	1		1		
C-5	04-107A-8260	Needle Bar Bushing(U)	바늘대 상붓싱			1	1	
C-6	SC-0110-1230	Screw (15/64" n=28)	바늘대 붓싱나사(15/64" n=28)			1	1	
C-7	04-108A-8260	Needle Bar Bushing(L)	바늘대 하붓싱			1	1	
C-8	SC-0110-1230	Screw (15/64" n=28)	바늘대 붓싱나사(15/64" n=28)			1	1	
C-9	44-0000-1230	Oil Wick	유심			1	1	
C-10	04-002C-8260	Holder For C-9	바늘대 유심잡이			1	1	
C-11	04103A-8260	Needle Bar Crank Guide	바늘대 크랭크 안내			1	1	
C-12	SC-0497-1230	Screw (3/16" n=28)	들대(전) 고정나사(3/16" n=28)			4	4	
C-13		Needle	바늘	1	1	1	1	
C-14	SC-A131-4522	Screw (1/8" n=44)	홈볼이 납작 작은나사(1/8" n=44)	1		1		
C-15	02-121A-7400	Needle Clamp 3/32:(Flat Presser Type)	침치(3/32)		1			
C-16	04-001A-8260	Needle Clamp 3/32:(Roller Presser Type)	침지(3/32)				1	
C-17	SC-0160-5607	Screw (9/64" n=40)	바늘 쥘나사(9/64" n=40)		2		2	
C-18	44-0000-1230	Oil Wick	유심	1	1			
C-19	04-012C-7400	Wick Holder(U) For C-18	요동축 유심잡이(上)	1	1			
C-20	04-013C-7400	Wick Holder(L) For C-18	요동축 유심잡이(下)	1	1			
C-21	44-107M-7900	Felt For Needle Bar Frame	바늘대 급유 헬트(A)	1	1			
C-22	04-110A-7400	Needle Bar Rock Shaft	요동축	1	1			
C-23	04-111A-7400	Needle Bar Rock Shaft Bushing(F)	요동축 앞붓싱	1	1			
C-24	04-114A-7400	Needle Bar Rock Shaft Bushing(R)	요동축 뒷붓싱	1	1			
C-25	AS-004803-00	Needle Bar Frame	바늘대 후레임	1	1			
C-25-1	04-102A-7400	Taper Pin	바늘대 후레임 고정핀	1	1			
C-26	04-102A-7400	Needle Bar Clamp	바늘대 잡이	1	1	1	1	
C-27	06-033M-7400	Felt For C-26	절환기 헬트	1	1	1	1	
C-28	SC-0158-3710	Screw (9/64" n=40)	홈볼이 납작 작은나사(9/64" n=40)	1	1	1	1	
C-29	04-004A-7400	Needle Bar Crank	바늘대 크랭크	1	1	1	1	
C-30	04-105A-7400	Needle Bar Guide Slide Block	바늘대 안내블럭	1	1	1	1	
C-31	04-107A-7400	Needle Bar Guide Plate	보강판	2	2			
C-32	SC-0116-7400	Screw (3/32" n=56)	안내판 고정나사(3/32" n=56)	4	4			
C-33	04-119A-7400	Needle Bar Rock Shaft Connecting Rod	바늘대 요동축 연결로드	1	1			
C-34	04-020S-7400	Screw For C-33	요동 로드 쥘나사	1	1			
C-35	04-021C-7400	Wick Holder	유심잡이(2-51)	1	1			
C-36	SC-0531-2302	Screw (9/64" n=40)	툽카바 고정판 고정나사(9/64" n=40)	1	1			
C-37	04-101A-8270	Needle Bar Rock Link	바늘대 요동링크	1	1			
C-38	04-016S-7400	Stud Screw For C-37	요동링크 단나사	2	2			
C-39	SN-0109-3710	Nut (5/16" n=24)	지그자그 조절 스톱퍼 너트(5/16" n=24)	2	2			
C-40	04-102A-8270	Needle Bar Rock Crank	요동축 크랭크	1	1			
C-41	SC-0523-7400	Screw (1/4" n=28)	요동 크랭크 쥘나사(1/4" n=28)	1	1			

D

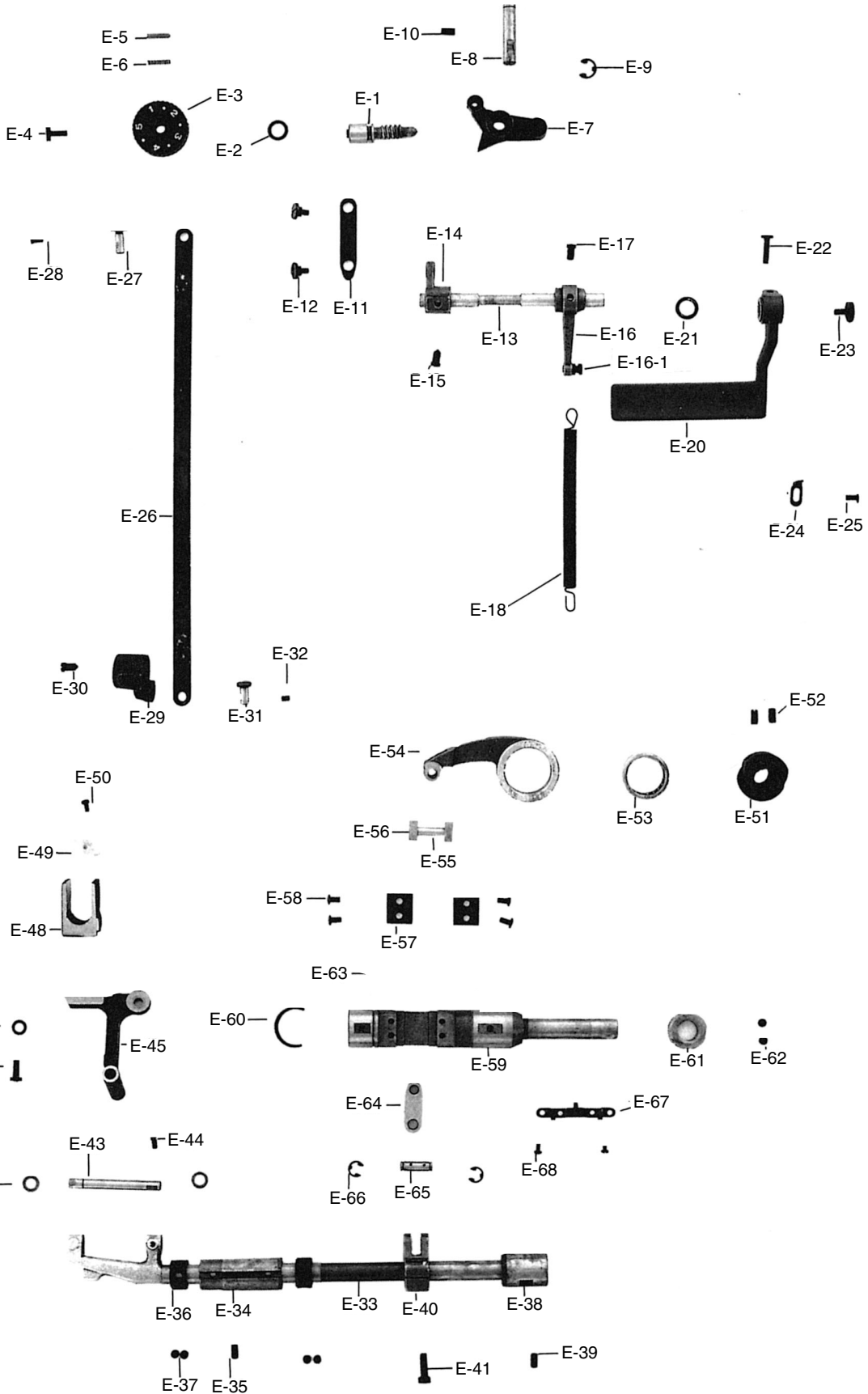
Presser Foot & Knee Lifting Mechanism

노루발 및 무릎올림 관계





Ref. No.	Parts No.	Name of Parts	품 명	Q' ty				비 고
				KM-817	KM-827	KM-816	KM-826	
D-1	05-011A-7400	Knee Lifting Lever	무릎 올림 레버	1	1	1	1	
D-2	05-014G-7400	Return Spring for D-1	무릎 올림 레버 스프링	1	1	1	1	
D-3	05-013S-7400	Stud Screw for D-1	무릎 올림 레버 힌지 나사	1	1	1	1	
D-4	05-012S-7400	Stopper for D-2	무릎 올림 레버 스프링 걸이 나사	1	1	1	1	
D-5	05-015S-7400	Presser Adjusting Screw	압력 조절나사	1	1	1	1	
D-6	05-116G-7400	Presser Bar Plate Spring	누름대 판 스프링	1	1	1	1	
D-7	05-017S-7400	Hinge Screw for D-6	누름대 판 스프링 단나사	1	1	1	1	
D-8	05-001C-8270	Knee Lifting Rod	무릎 올림봉	1	1	1	1	
D-9	05-020P-2302	Pin for D-8	분할핀	1	1	1	1	
D-10	05-021A-7400	Collar for D-8	무릎 올림봉 카라	1	1	1	1	
D-11	SC-0128-7400	Screw(11/64" n=40)	인봉카라 쥘나사 (11/64" n=40)	1	1	1	1	
D-12	05-018C-7400	Knee Lifter Link	무릎 올림 레버 연결 링크	1	1	1	1	
D-13	05-019S-7400	Stud Screw for D-12	연결 링크 단나사	1	1	1	1	
D-14	05-022A-7400	Knee Lifting Roller Bracket Assembly	로올러(조)	1Set	1Set	1Set	1Set	
D-15	SC-0542-1230	Screw(11/64" n=40)	실닛추기 고정나사(11/64" n=40)	1	1	1	1	
D-16	05-006A-7400	Presser Bar Lifter	누름대 올리기	1	1	1	1	
D-17	05-007S-7400	Hinge Pin for D-16	누름대 올리기 힌지나사	1	1	1	1	
D-18	05-101A-7400	Flat Presser Bar	누름대	1	1			
D-19	05-102A-7400	Presser Bar Bushing(U)	누름대 붓싱(上)	1	1	1	1	
D-20	SC-0507-1230	Screw(15/64" n=28)	상축 붓싱 고정나사(15/64" n=28)	1	1	1	1	
D-21	05-103A-7400	Presser Bar Holder	누름대 잡이 (K3300)	1	1	1	1	
D-22	SC-A174-4122	Screw(11/64" n=40)	홈볼이 납작 작은나사(11/64" n=40)	1	1	1	1	
D-23	05-104A-7400	Presser Bar Lifter Bracket	누름대 올리기 브라켓(K008)	1	1	1	1	
D-24	05-005S-7400	Stud Screw for D-23	누름대 올리기 단나사	1	1	1	1	
D-25	05-008A-7400	Hook for Presser Bar Plate Spring	누름대 판 스프링 걸이(K009)	1	1	1	1	
D-26	SC-0158-3710	Screw(9/64" n=40)	면판 쥘나사 (15/64" n=40)	1	1	1	1	
D-27	05-009A-7400	Presser Bar Bushing(L)	누름대 붓싱(下)	1	1	1	1	
D-28	SC-0507-1230	Screw(15/64" n=28)	상축붓싱 고정나사(15/64" n=28)	1	1	1	1	
D-29	05-001A-8170	Flat Presser Foot	노루발	1		1		
D-30	05-210A-7400	Flat Presser Foot	노루발		1		1	
D-31	SC-0315-2302	Screw(9/64" n=40)	노루발 쥘나사(9/64" n=40)	1	1	1	1	
D-32	05-101A-8260	Roller Presser Bar	누름대			1	1	
D-33-1	81-004A-8260	Roller Presser Bracket	로올러 노루발 브라켓			1	1	D-33A Roller Presser Foot(S) Assembly
D-33-4	SC-0199-2700	Screw(11/64" n=40)	솔레노이드 부착 카바나사(11/64" n=40)			1	1	
D-33-5A	81-011A-8260	Roller Presser Foot(S)	노루발(로올러) φ 23			1	1	
D-33-5B	05-017A-8150	Roller Presser Foot(L)	로올러 노루발 φ 32			1	1	
D-33-9	04-005P-8260	Stopper Pin for D-33-1	브라켓 스톱퍼 핀			1		
D-33-10	SC-0160-5607	Screw(9/64" n=40)	바늘 쥘나사(9/64" n=40)			2	2	
D-33-11A	81-017A-8260	Needle Guide Holder(S)	로올러 노루발 바늘안내 홀더(小)				1	D-33B Roller Presser Foot(L) Assembly
D-33-11B	81-007A-8260	Needle Guide Holder(L)	로올러 노루발 바늘안내 홀더(大)				1	
D-33-12	81-006A-8260	Needle Guide	로올러 노루발 바늘안내 (3/32)				1	
D-33-13	81-005W-8260	Washer for D-33-12	로올러 노루발 홀더 와셔				1	
D-33-14	SC-0130-1230	Screw(1/8" n=44)	톱니 쥘나사 (1/8" n=44)				1	
D-33-15	04-004G-8260	Spring for D-33-1	브라켓 스프링			1	1	

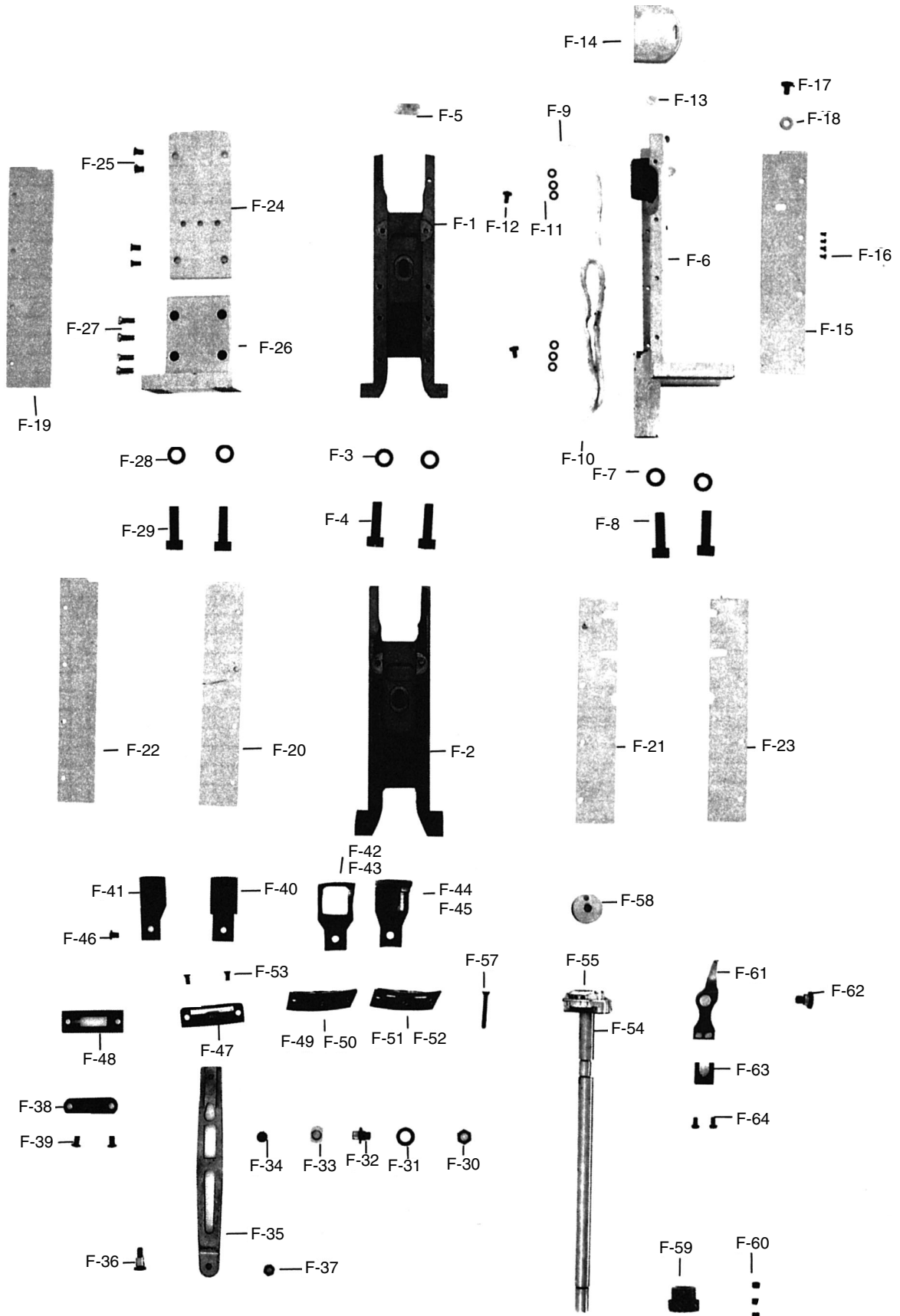




Ref. No.	Parts No.	Name of Parts	품명	Q' ty				비고
				KM-817	KM-827	KM-816	KM-826	
E-1	06-010A-7400	Feed Regulator Dial Shaft	다이알 축	1	1	1	1	
E-2	06-010R-1230	O-Ring For E-1	다이알 축 오링	1	1	1	1	
E-3	06-001A-7500	Length Control Dial Plate	다이알 문자판(5)	1	1	1	1	
E-4	SC-0193-1230	Screw(3/16" n=28)	다이알 판 쥘나사(3/16" n=28)	1	1	1	1	
E-5	06-012P-7400	Pin For E-3	다이알 핀	1	1	1	1	
E-6	06-027G-7400	Spring For E-3	다이알 스프링	1	1	1	1	
E-7	06-104A-7400	Feed Regulator	피이드 조절기	1	1	1	1	
E-8	06-002P-7400	Feed Regulator Stud	피이드 조절기 힌지핀	1	1	1	1	
E-9	06-003C-7400	E-Ring(φ7)	피이즈 조절기 힌지핀 E링 7	1	1	1	1	
E-10	SC-0507-1230	Screw(15/64" n=28)	상축 붓싱 고정나사(15/64" n=28)	1	1	1	1	
E-11	06-005C-7400	Feed Regulator Connecting Link	피이드 조절기 연결링크	1	1	1	1	
E-12	06-006S-7400	Stud Screw For E-11	피이드 조절기 연결링크 단나사	2	2	2	2	
E-13	06-102A-8270	Reverse Lever Shaft	역진 레버 축	1	1	1	1	
E-14	06-107A-7400	Reverse Lever Shaft Crank	역진 레버 크랭크	1	1	1	1	
E-15	SC-0330-7400	Screw(15/64" n=28)	역진 레버 크랭크 쥘나사(15/64" n=28)	1	1	1	1	
E-16	06-217A-7400	Link For Reverse Lever Spring	역진 레버 축 스프링걸이	1	1	1	1	
E-16-1	06-018P-7400	Roller For Spring Hook	역진 레버 축 스프링걸이 핀	1	1	1	1	
E-17	SC-0122-1230	Screw(15/64" n=28)	톱니 받침 축 고정나사(15/64" n=28)	1	1	1	1	
E-18	06-003G-8270	Reverse Lever Return Spring	역진 레버 스프링	1	1	1	1	
E-20	06-020A-7400	Reverse Lever	역진 레버	1	1	1	1	
E-21	06-021W-7400	Washer For E-20	역진 레버 와셔	1	1	1	1	
E-22	SC-0186-1230	Screw(3/16" n=32)	역진 레버 고정나사(3/16" n=32)	1	1	1	1	
E-23	SC-0185-1230	Screw(3/16" n=32)	레버 덮개 나사(3/16" n=32)	1	1	1	1	
E-24	06-022C-7400	Stopper For E-20	역진 레버 스톱퍼	1	1	1	1	
E-25	SC-0543-2302	Screw(11/64" n=40)	톱 카바 힌지 고정나사(11/64" n=40)	1	1	1	1	
E-26	06-004A-8270	Feed Regulator Connecting Rod	절환기 연결 로드	1	1	1	1	
E-27	06-026P-7400	Pin(A) For E-26	절환기 연결 로드 핀(A)	1	1	1	1	
E-28	SC-0128-7400	Screw(11/64" n=40)	인봉 카라 쥘나사(11/64" n=40)	1	1	1	1	
E-29	06-105A-8270	Feed Regulator Shaft Crank	절환기 크랭크	1	1	1	1	
E-30	SC-0330-7400	Screw(15/64" n=28)	역진 레버 크랭크 쥘나사(15/64" n=28)	1	1	1	1	
E-31	06-112A-7500	Pin(B) For E-26	피이드 조절기 편심축(B)	1	1	1	1	
E-32	SC-0542-1230	Screw(11/64" n=40)	실 낮추기 고정나사(11/64" n=40)	1	1	1	1	
E-33	06-179A-5607	Feed Rock Shaft	수평밀대	1	1	1	1	
E-34	06-143A-7400	Feed Rock Shaft Bushing(F)	수평밀대 전붓싱	1	1	1	1	
E-35	SC-0514-7400	Screw(15/64" n=28)	상축 앞붓싱 고정나사(15/64" n=28)	1	1	1	1	
E-36	06-142A-7400	Collar For E-33	수평밀대 카라	2	2	2	2	
E-37	SC-A129-4515	Screw(1/4" n=40)	흡블이 멈춤나사(1/4" n=40)	4	4	4	4	
E-38	06-139A-7400	Feed Rock Shaft Bushing(R)	수평밀대 후붓싱	1	1	1	1	
E-39	SC-0514-7400	Screw(15/64" n=28)	상축 앞붓싱 고정나사(15/64" n=28)	1	1	1	1	
E-40	06-141A-7400	Feed Rock Shaft Crank	수평밀대 크랭크	1	1	1	1	
E-41	SC-0253-7400	Screw(1/4" n=28)	요동 크랭크 쥘나사(1/4" n=28)	1	1	1	1	
E-42	06-046W-7400	Washer For E-43	톱니 받침 와셔	2	2	2	2	
E-43	06-147A-7400	Feed Bar Shaft	톱니 받침 축	1	1	1	1	
E-44	SC-0128-7400	Screw(11/64" n=40)	인봉 카라 쥘나사(11/64" n=40)	1	1	1	1	
E-45	06-106A-8270	Feed Bar	톱니 받침	1	1	1	1	
E-46	06-051W-7400	Washer For E-48	포크 쥘나사 와셔	1	1	1	1	
E-47	SC-0106-7400	Screw(15/64" n=28)	포트 쥘나사(육각) (15/64" n=28)	1	1	1	1	
E-48	06-152A-7400	Feed Bar Fork	톱니 받침 포크(KSM004)	1	1	1	1	
E-49	06-053M-7400	Felt For E-48	포크 헬트	1	1	1	1	
E-50	SC-0531-2302	Screw(9/64" n=40)	톱 카바 고정판 고정나사(9/64" n=40)	1	1	1	1	
E-51	06-138A-7400	Feed Cam	피이드 캠	1	1	1	1	
E-52	SC-A308-4517	Screw(15/64" n=28)	육각구멍블이 멈춤나사(15/64" n=40)	2	2	2	2	
E-53	06-036A-7400	Needle Bearing	니어들 베어링	1	1	1	1	
E-54	06-135A-7400	Feed Cam Connecting Rod	베어링 로드	1	1	1	1	
E-55	06-032P-7400	Slide Block Shaft	베어링 로드 연결핀	1	1	1	1	
E-56	06-131A-7400	Slide Block	슬라이드 블럭	2	2	2	2	
E-57	06-030C-7400	Slide Block Guide Plate	슬라이드 블럭 안내판	2	2	2	2	
E-58	SC-0543-2302	Screw(11/64" n=40)	톱 카바 고정판 고정나사(11/64" n=40)	4	4	4	4	
E-59	06-129A-7400	Feed Regulator Shaft	절환기 몸체	1	1	1	1	
E-60	06-034W-7400	Stop Ring C	절환기 와셔	1	1	1	1	
E-61	02-121A-1230	Collar For E-59	상축 카라	1	1	1	1	
E-62	SC-A129-4515	Screw(1/4" n=40)	흡블이 멈춤나사(1/4" n=40)	2	2	2	2	
E-63	06-033M-7400	Felt	절환기 헬트	4	4	4	4	
E-64	06-137A-7400	Level Feed Connecting Link	수평 피이드 연결링크(KS007)	1	1	1	1	
E-65	06-040P-7400	Stud For E-40	연결핀	1	1	1	1	
E-66	06-020C-7400	E-Ring(φ6)	E링(φ6)	2	2	2	2	
E-67	44-025C-7400	Wick Holder For E-59	절환기 유심잡이	1	1	1	1	
E-68	SC-0549-2302	Screw(1/8" n=44)	바늘데 후레임 실걸이 나사(1/8" n=44)	2	2	2	2	

F

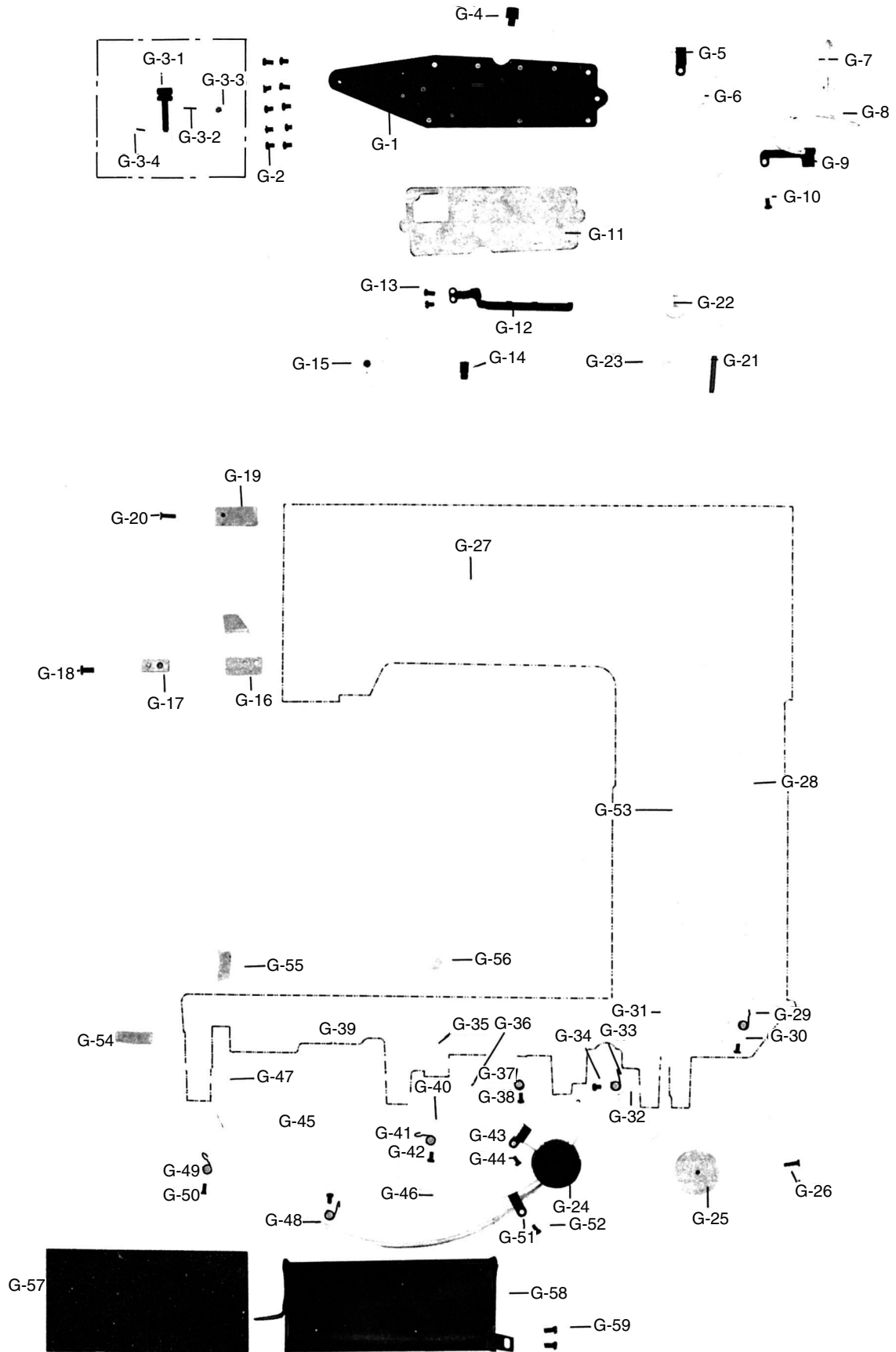
Post & Hook Mechanism 포스트 및 훅 관계



Ref. No.	Parts No.	Name of Parts	품 명	Q' ty				비 고
				KM-817	KM-827	KM-816	KM-826	
F-1	09-118A-8170	Post(KM-817, 816)	포스트	1		1		
F-2	09-118A-8270	Post(KM-827, 826)	포스트		1		1	
F-3	09-025W-8270	Washer for F-1, F-2	새들 쥘나사 와셔	2	4	2	4	
F-4	SC-0344-8160	Screw(5/16" n=24)	포스크 고정나사(5/16" n=24)	2	4	2	4	
F-5	06-053M-7400	Felt for Feed Dog Lever	포크 헬트	1	1	1	1	
F-6	GP-012825-00	Saddle	새들	1	2	1	2	
F-7	09-025W-8270	Washer for F-6	새들 쥘나사 와셔	2	4	2	4	
F-8	SC-0326-8260	Screw(5/16" n=24)	새들 쥘나사(5/16" n=24)	2	4	2	4	
F-11	02-019W-1230	Washer for F-10	상축 헬트 와셔	6	12	6	12	
F-12	SC-0365-3710	Screw(9/64" n=40)	면판 측면 카바나사(하) (9/64" n=40)	2	4	2	4	
F-13	02-009M-7400	Felt for F-6	상축 앞 붓싱 헬트	1	2	1	2	
F-14	GP-010492-00	Hook Cover	가마축 슬라이드	1	2	1	2	
F-15	09-123C-8170	Post Cover(F)	포스트 커버(前)	1		1		
F-16	SC-A301-4119	Screw(9/64" n=40)	홈볼이 절시 작은나사(9/64" n=40)	8	16	8	16	
F-17	SC-0537-8260	Screw(3/16" n=32)	포스트 고정나사(대)(3/16" n=32)	1	3	1	3	
F-18	01-023C-3710	Washer for F-17	와셔5	1	4	1	4	
F-19	09-124C-8170	Post Cover(R)	포스트 커버(後)	1		1		
F-20	09-124C-8270	Post Lever Cover(F)	포스트 커버(후)		1		1	
F-21	09-121C-8270	Post Right Cover(F)	포스트 커버(좌)		1		1	
F-22	09-123C-8270	Post Left Cover(R)	포스트 커버(전)		1		1	
F-23	09-122C-8270	Post Right Cover(R)	포스트 커버(우)		1		1	
F-24	09-001A-8170	Post Cover	포스트 커버(좌)	1		1		
F-25	SC-0501-2302	Screw(11/64" n=40)	실채기 카바나사(11/64" n=40)	4		4		
F-26	09-002A-8170	Post Support	포스트 받침	1		1		
F-27	SC-0179-3710	Screw(11/64" n=40)	윗뚜껑 쥘나사(11/64" n=40)	4		4		
F-28	09-025W-8270	Washer for F-29	새들 쥘나사 와셔	2		2		
F-29	SC-0326-8260	Screw(5/16" n=24)	새들 쥘나사(5/16" n=24)	2		2		
F-30	SN-0116-3400	Nut(1/4" n=40)	수평 운동조절 축 너트(1/4" n=40)	1	1	1	1	
F-31	09-009W-8270	Washer for F-32	슬라이드 블럭 와셔	1	1	1	1	
F-32	09-006S-8270	Slide Block Shaft	슬라이드 블럭 나사	1	1	1	1	
F-33	09-107A-8270	Slide Block	톱니 레버 슬라이드 블럭	1	1	1	1	
F-34	09-008S-8270	Screw for F-33	슬라이드 블럭 마감 나사	1	1	1	1	
F-35	09-011A-8270	Feed Dog Lever	톱니 레버	1	1	1	1	
F-36	06-008S-8270	Stud Screw for Feed Bar	톱니 받침 나사	1	1	1	1	
F-37	SN-0115-7400	Nut(3/16" n=32)	오프너 너트(3/16" n=32)	1	1	1	1	
F-38	09-005C-8270	Guide Plate for F-35	톱니 레버 보강판	1	1	1	1	
F-39	SC-0543-2302	Screw(11/64" n=24)	톱 카바 한지 고정나사(11/64" n=40)	2	2	2	2	
F-40	06-001A-8170	Feed Dog(KM-817)	톱니	1				
F-41	06-012A-8270	Feed Dog(KM-827)	톱니(3/32)		1			
F-42	06-001A-8160	Feed Dog(Roller Presser Type)	톱니(로울러 노루발용)			1		
F-43	06-001A-8260	Feed Dog(Roller Presser Type)	톱니				1	
F-44	06-011A-8160	Feed Dog(Flat Presser Type)	톱니(평노루발용)			1		
F-45	06-001A-8260	Feed Dog(Roller Presser Type)	톱니				1	
F-46	SC-0543-2302	Screw(1/8" n=44)	톱 카바 한지 고정나사(1/8" n=44)	1	1	1	1	
F-47	01-005A-8170	Needle Plate(KM-817)	침판	1				
F-48	01-004A-8270	Needle Plate(KM-827)	침판(3/32)		1			
F-49	01-005A-8160	Needle Plate(Roller Presser Type)	침판(로울러 노루발용)			1		
F-50	01-005A-8260	Needle Plate(Roller Presser Type)	침판(3/32)				1	
F-51	01-015A-8160	Needle Plate(Flat Presser Type)	침판(평노루발용)	1				
F-52	01-015S-8260	Needle Plate(Flat Presser Type)	침판(3/16)		1			
F-53	SC-0310-8130	Screw(9/64" n=40)	침판 나사(9/64" n=40)	2	2	2	2	
F-54	09-113A-8270	Hook Shaft	훅 축	1	2	1	2	
F-55	09-036A-8570	Rotary Hook Assembly	가마	1Set	2Set	1Set	2Set	
F-57	SC-0147-8270	Screw(9/64" n=40)	가마 고정나사(9/64" n=40)	1	2	1	2	
F-58	09-130A-7400	Bobbin	보빈	1	2	1	2	
F-59	GP-018249-00	Rotary Hook Gear	기어(소)	1	2	1	2	
F-60	SC-A550-4517	Screw(1/4" n=40)	홈볼이 멈춤나사(1/4" n=40)	3	6	3	6	
F-61	09-114A-8270	Opener	오프너	1	2	1	2	
F-62	09-015S-8270	Stud Screw for F-61	오프너 단나사	1	2	1	2	
F-63	09-116A-8270	Fork for F-61	오프너 블럭	1	2	1	2	
F-64	SC-0502-2302	Screw (9/64" n=40)	윗뚜껑 고정판 고정나사(대)(9/64" n=40)	2	4	2	4	

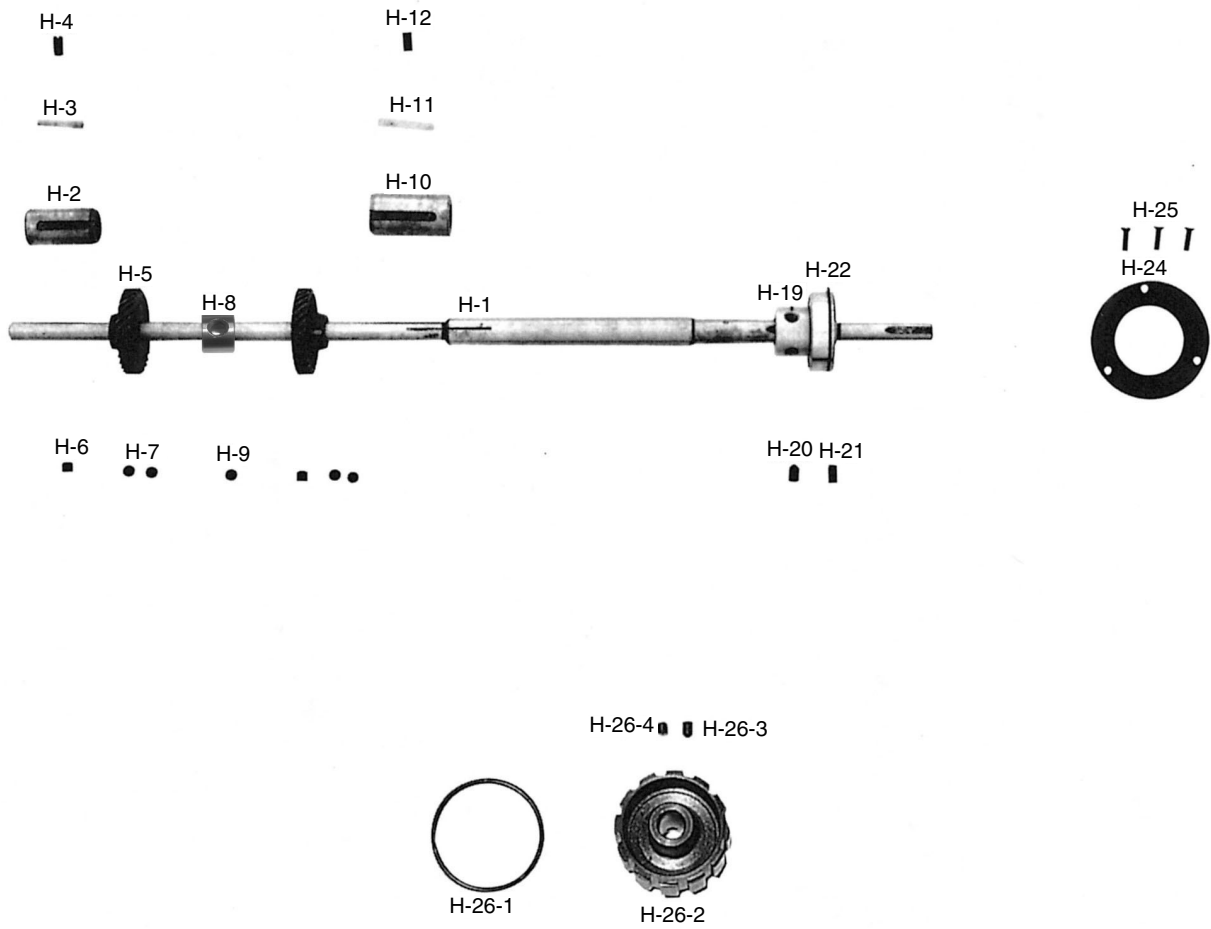


Lubrication 급유 관계



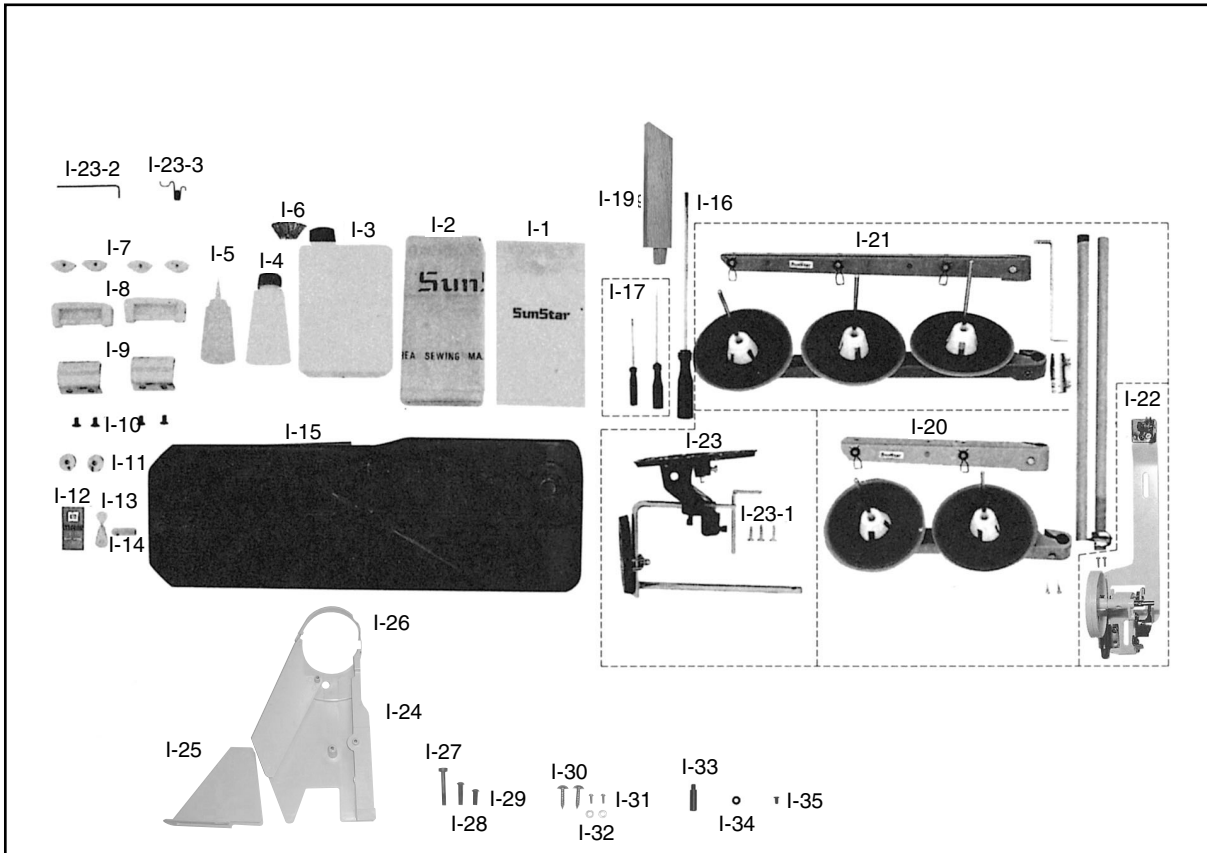


Ref. No.	Parts No.	Name of Parts	품명	Q' ty				비고
				KM-817	KM-827	KM-816	KM-826	
G-1	44-001A-7400	Oil Receive Plate	기름 받침판	1	1	1	1	
G-2	SC-0502-2302	Screw(9/64" n=40)	윗뚜껑 고정판 고정나사(대)(9/64" n=40)	10	10	10	10	
G-3-1	44-006A-7400	Oil Adjusting Knob	오일 조절축	1	1	1	1	
G-3-2	44-007P-7400	Pin(A) For G-3-1	오일 조절 축핀(대)	1	1	1	1	
G-3-3	44-008W-7400	Washer For G-3-2	오일 조절 축 와셔	1	1	1	1	
G-3-4	44-008P-7400	Pin(B) For G-3-1	오일 조절 축핀(소)	2	2	2	2	
G-4	44-012R-7400	Cap For Oil Inlet	주유구 마개(6-8)	1	1	1	1	
G-5	44-011C-7400	Felt Presser	유심 헬트 고정판(6-7)	1	1	1	1	
G-6	44-010M-7400	Felt	오일 탱크 헬트(6-6)	1	1	1	1	
G-7	44-0000-1230	Oil Wick	유심	1	1	1	1	
G-8	44-0000-1230	Oil Wick	유심	1	1	1	1	
G-9	44-009G-7400	Spring Plate	오일 조절판 스프링	1	1	1	1	
G-10	SC-0502-2302	Screw(9/64" n=40)	윗뚜껑 고정판 고정나사(대)(9/64" n=40)	1	1	1	1	
G-11	44-013R-7400	Packing For G-1	기름받침 판 박킹	1	1	1	1	
G-12	44-014C-7400	Wick Holder	오일 유심 안내(6-11)	1	1	1	1	
G-13	SC-0531-2302	Screw(9/64" n=40)	윗뚜껑 고정판 고정나사(소)(9/64" n=40)	2	2	2	2	
G-14	44-015C-7400	Oil Guide Tube	오일 안내	1	1	1	1	
G-15	02-014M-2302	Felt	상축 급유 헬트	1	1	1	1	
G-16	44-017C-7400	Oil Cover	기름막이 판	1	1	1	1	
G-17	44-018C-8130	Presser For G-16	기름막이 누름판	1	1	1	1	
G-18	06-024S-7400	Screw(3/16" n=32)	흡불이 냄비 작은나사(3/16" n=32)	1	1	1	1	
G-19	44-016M-7400	Felt For Thread Take-Up Lever	실채기 급유 헬트(6-14)	1	1	1	1	
G-20	SC-A156-4118	Screw(9/64" n=40)	흡불이 냄비 작은나사(9/64" n=40)	1	1	1	1	
G-21	01-017C-7400	Oil Pipe	오일 파이프(1-14)	1	1	1	1	
G-22	44-027C-7400	Oil Gauge Window	유창	1	1	1	1	
G-23	06-043R-1230	Facking For G-22	피이드 조절기 붓싱 오링	1	1	1	1	
G-24	44-022C-7400	Oil Tube Supporter	오일 파이프 고정캡	1	1	1	1	
G-25	44-023M-7400	Felt	베드 오일 헬트	1	1	1	1	
G-26	SC-0518-7400	Screw(9/64" n=40)	헬트 줌나사(9/64" n=40)	1	1	1	1	
G-27	44-0000-1230	Oil Wick	유심	1	1	1	1	
G-28	44-012C-1230	Oil Tube For G-27	환류 파이프	1	1	1	1	
G-29	44-026G-7400	Tube Holder For G-28	헬트 잡이 스프링	1	1	1	1	
G-30	SC-0531-2302	Screw(9/64" n=40)	윗뚜껑 고정판 고정나사(소)(9/64" n=40)	1	1	1	1	
G-31	44-0000-1230	Oil Wick	유심	1	1	1	1	
G-32	44-012C-1230	Oil Tube For G-31	환류 파이프	1	1	1	1	
G-33	44-026G-7400	Tube Holder For G-32	헬트 잡이 스프링	1	1	1	1	
G-34	SC-0531-2302	Screw(9/64" n=40)	윗뚜껑 고정판 고정나사(소)(9/64" n=40)	1	1	1	1	
G-35	44-0000-1230	Oil Wick	유심	1	1	1	1	
G-36	44-012C-1230	Oil Tube For G-35	환류 파이프	1	1	1	1	
G-37	44-026G-7400	Tube Holder For G-36	헬트 잡이 스프링	1	1	1	1	
G-38	SC-0531-2302	Screw(9/64" n=40)	윗뚜껑 고정판 고정나사(소)(9/64" n=40)	1	1	1	1	
G-39	44-0000-1230	Oil Wick	유심	1	1	1	1	
G-40	44-012C-1230	Oil Tube For G-39	환류 파이프	1	1	1	1	
G-41	44-026G-7400	Tube Holder For G-40	헬트 잡이 스프링	1	1	1	1	
G-42	SC-0531-2302	Screw(9/64" n=40)	윗뚜껑 고정판 고정나사(소)(9/64" n=40)	1	1	1	1	
G-43	44-011C-7400	Oil Wick Setting Plate For G-36, 40	유심헬트 고정판(6-7)	1	1	1	1	
G-44	SC-0531-2302	Screw(9/64" n=40)	윗뚜껑 고정판 고정나사(소)(9/64" n=40)	1	1	1	1	
G-45	44-0000-1230	Oil Wick	유심	1	1	1	1	
G-46	44-012C-1230	Oil Tube For G-45	환류 파이프	1	1	1	1	
G-47	44-0000-1230	Oil Wick	유심	1	1	1	1	
G-48	44-012C-1230	Oil Tube For G-47	환류 파이프	1	1	1	1	
G-49	44-026G-7400	Tube Holder For G-48	헬트 잡이 스프링	2	2	2	2	
G-50	SC-0531-2302	Screw(9/64" n=40)	윗뚜껑 고정판 고정나사(소)(9/64" n=40)	2	2	2	2	
G-51	44-011C-7400	Oil Wick Setting Plate For G-36, 40	유심헬트 고정판(6-7)	1	1	1	1	
G-52	SC-0531-2302	Screw(9/64" n=40)	윗뚜껑 고정판 고정나사(소)(9/64" n=40)	1	1	1	1	
G-53	44-0000-1230	Oil Wick	유심	1	1	1	1	
G-54	44-019M-7400	Felt	앞 하축 붓싱 마개 헬트(5-3)	1	1	1	1	
G-55	44-019M-7400	Felt For Lower Shaft Bushing(F)	혹 몸체 전 붓싱 헬트(6-19)	1	1	1	1	
G-56	07-003M-7400	Felt For Lower Shaft Bushing(M)	혹 몸체 전 붓싱 헬트(6-19)	1	1	1	1	
G-57	44-001M-8270	Felt	헬트	1	1	1	1	
G-58	44-002A-8270	Cover For G-57	헬트 받침판	1	1	1	1	
G-59	SC-0543-2302	Screw(11/64" n=40)	툽카바 힌지 고정나사(11/64" n=40)	2	2	2	2	



Ref. No.	Parts No.	Name of Parts	품 명	Q' ty				비 고
				KM-817	KM-827	KM-816	KM-826	
H-1	07-101A-8270	Lower Shaft	하축	1	1	1	1	
H-2	07-102A-8270	Lower Shaft Bushing(F)	하축 앞 붓싱	1	1	1	1	
H-3	07-004M-7400	Felt For H-2	하축 앞 붓싱 펠트(5-4)	1	1	1	1	
H-4	SC-0507-1230	Screw (15/64" n=28)	상축 중 붓싱 고정나사(15/64" n=28)	1	1	1	1	
H-5	GP-018248-01	Lower Shaft Spiral Gear	기어(대)	1	2	1	2	
H-6	SC-A117-4417	Screw(1/4" n=40)	흡블이 멈춤나사(1/4" n=40)	1	2	1	2	
H-7	SC-A308-4517	Screw(1/4" n=40)	흡블이 멈춤나사(1/4" n=40)	2	4	2	4	
H-8	06-054A-5700	Vertical Feed Eccentric Cam	편심 캠	1	1	1	1	
H-9	SC-A550-4517	Screw(1/4" n=40)	흡블이 멈춤나사(1/4" n=40)	1	1	1	1	
H-10	07-103A-8270	Lower Shaft Bushing (M)	하축 중 붓싱	1	1	1	1	
H-11	07-004M-7400	Felt For H-10	하축 앞 붓싱 펠트(5-4)	1	1	1	1	
H-12	SC-0507-1230	Screw(15/64" n=28)	상축 붓싱 고정나사(15/64" n=28)	1	1	1	1	
H-19	07-007A-7400	Bearing Bushing	베어링 홀다	1	1	1	1	
H-20	SC-A117-4417	Screw(1/4" n=40)	육각구멍블이 멈춤나사(1/4" n=40)	1	1	1	1	
H-21	SC-A308-4517	Screw(1/4" n=40)	육각구멍블이 멈춤나사(1/4" n=40)	1	1	1	1	
H-22	07-008A-7400	Bearing(6203NR)	하축 베어링(6203)	1	1	1	1	
H-24	07-009A-7400	Bearing Presser	베어링 카바	1	1	1	1	
H-25	SC-0155-7400	Screw(9/64" n=40)	접시머리 보울트(9/64" n=40)	3	3	3	3	
H-26-1	02-015C-7400	Belt Pulley Ring	후렌치	1	1	1	1	
H-26-2	80-002A-8270	Belt Pulley(L)	타이밍 풀리(하)	1	1	1	1	
H-26-3	SC-A117-4417	Screw(1/4" n=40)	육각흡블이 멈춤나사(1/4" n=40)	1	1	1	1	
H-26-4	SC-A308-4517	Screw(1/4" n=40)	육각흡블이 멈춤나사(1/4" n=40)	1	1	1	1	

Accessories 액세서리






Ref. No.	Parts No.	Name of Parts	품 명	Q' ty				비 고
				KM-817	KM-827	KM-816	KM-826	
I-1	91-001C-1230	Accessory Bag	액세서리 박스	1	1	1	1	
I-2	91-001C-8270	Head Cover	미싱커버(소)	1	1	1	1	
I-3	91-108C-1230	Oil	오일캔	1	1	1	1	
I-4	91-002C-7400	Oiler	유차	1	1	1	1	
I-5	91-011C-1230	Oil Receiver	유차병	1	1	1	1	
I-6		Nail	못	6	6	6	6	
I-7	91-103R-7400	Head Cushion	헨지고무(소)	4	4	4	4	
I-8	91-106R-7400	Rubber Cushion For Hinge	헨지고무(대) <White>	2	2	2	2	
I-9	91-004C-7400	Head Hinge	헨지쇠	2	2	2	2	
I-10	SC-0118-7400	Screw(1/4" n=24)	헨지 죠나사(1/4" n=24)	4	4	4	4	
I-11	09-130A-7400	Bobbin	보빈	2	2	2	2	
I-12		Needle	바늘	5	5	5	5	
I-13	91-007C-7400	Thread Inserting Guide	실끼기	1	1	1	1	
I-14	01-024M-7400	Felt	윗실 금유 헬트	1	1	1	1	
I-15	91-001A-7400	Oil Pan	오일 팬	1	1	1	1	
I-16	91-102C-1230	Driver (Large)	드라이버(大)	1	1	1	1	
I-17	91-103C-1230	Driver (Middle, Small)	드라이버(中, 小)	1	1	1	1	
I-19	90-003A-8670	Head Rest	두부 지지봉	1	1	1	1	
I-20	91-007A-2302	Thread Stand Assembly	실패꽃이(組)	1Set		1Set		
I-21	91-008A-7400	Thread Stand Assembly	3본 사립봉		1Set		1Set	
I-22	91-101A-2700	Bobbin Winder Assembly	실감기(組)	1Set	1Set	1Set	1Set	
I-23	43-007A-7400	Knee Lifting Assembly	무릎올림(組)	1Set	1Set	1Set	1Set	
I-23-1	91-002S-3400	Screw For I-23	목나사	3	3	3	3	
I-23-2	91-001C-2700	Wrench (3MM)	L-렌치(3MM)	1	1	1	1	
I-23-3	43-010G-3400	Spring for I-23	무릎 받침축 리턴 S/P	1	1	1	1	
I-24	60-003A-8270	Belt Cover "A"	벨트커버 "A"	1	1	1	1	
I-25	60-004A-8270	Belt Cover "B"	벨트커버 "B"	1	1	1	1	
I-26	GP-011266-00	Belt Cover "C"	벨트커버 "C"	1	1	1	1	
I-27	SC-0331-7400	Screw (15/16" n=28)	가마토대 슬리브 고정나사	1	1	1	1	
I-28	SC-0546-1230	Screw (15/16" n=28)	제어체 운동나사(대)	1	1	1	1	
I-29	SC-0545-1230	Screw (15/16" n=28)	제어체 운동나사(소)	1	1	1	1	
I-30	60-003S-7400	Screw For I-25	벨트커버B (하)고정나사	2	2	2	2	
I-31	SC-0196-2700	Screw M3.0×0.5	슬레노이드 부착 고정나사	2	2	2	2	
I-32	11-017W-2700	Washer For I-31	슬레노이드 부착 평와셔	2	2	2	2	
I-33	60-006P-7400	Support Pin	벨트커버 지지핀	1	1	1	1	
I-34	60-004W-7400	Washer	벨트커버 스프링 와셔	1	1	1	1	
I-35	SC-0543-2302	Screw (11/64" n=40)	벨트커버 고정나사	1	1	1	1	






Gauge Parts 게이지 관계






KM-827

Gauge Size	(C-15)	(D-30)	(F-41)	(F-48)
		 Needle Clamp	 Presser Foot	 Feed Dog
1/16" (1.6mm)	02-221A-7400	05-210A-7400	06-113A-8270	01-204A-8270
3/32" (2.4mm)	02-121A-7400	05-210A-7400	06-012A-8270	01-004A-8270
1/8" (3.2mm)	02-521A-7400	05-510A-7400	06-013A-8270	01-304A-8270
3/16" (4.8mm)	02-321A-7400	05-310A-7400	06-112A-8270	01-104A-8270
1/4" (6.4mm)	02-021A-7400	05-010A-7400	06-115A-8270	01-404A-8270
1" (25.4mm)	02-921A-7400	05-910A-7400	06-116A-8270	01-504A-8270

KM-826 (Roller Presser Type)

Gauge Size	D-33-12	C-16	F-43	F-50
		 Needle Clamp	 Presser Foot	 Feed Dog
1" (25.4mm)	81-036A-8260	04-051A-8260	06-012A-8260	01-045A-8260
3/64" (1.2mm)	81-046A-8260	04-021A-8260	06-013A-8260	01-025A-8260
1/16" (1.6mm)	81-016A-8260	04-011A-8260	06-014A-8260	01-015A-8260
3/32" (2.4mm)	81-006A-8260	04-001A-8260	06-001A-8260	01-005A-8260
1/8" (3.2mm)	81-026A-8260	04-031A-8260	06-011A-8260	01-035A-8260

KM-826 (Flat Presser Type)

Gauge Size	C-15	D-30	F-45	F-52
		 Needle Clamp	 Presser Foot	 Feed Dog
1/8" (3.2mm)	02-521A-7400	05-510A-7400	06-011A-8260	01-035A-8260
1/4" (6.4mm)	02-021A-7400	05-010A-7400	06-021A-8260	01-155A-8260

수정 리스트

Changed Parts List

No.	Ref. No.	Parts No.	Name of Parts	Contents	Date	Old Parts No.	Remarks
1	I-3	91-108C-1230	Oil Tank	Substitution	98. 4	91-008C-1230	98. 3/4
2	E-7	06-004A-7400	Feed Regulator	Substitution	98. 5	06-040A-8270	
3	E-31	06-012A-7500	Pin(B) for E-26	Substitution	98. 5	06-027P-7400	
4	I-2	90-001C-8270	Head Cover	Substitution	98. 7	91-013C-1230	
5	I-23	43-007A-7400	Knee Lifting Assembly	Substitution	98. 7	91-002A-2302	
6	H-7	SC-A308-4517	Screw(1/4" n = 40)	Substitution	98. 5	SC-0129-4515	
7	H-6	SC-A117-4417	Screw(1/4" n = 40)	Substitution	98. 5	SC-0115-4215	
8	F-60	SC-A550-4517	Screw(1/4" n = 40)	Substitution	98. 5	SC-0129-4515	
9	H-9	SC-A550-4517	Screw(1/4" n = 40)	Substitution	98. 5	SC-0115-4215	
10	A-38		Maker Mark	Substitution	98. 8	01-035M-8130	98. 4/4
11	C-2	04-001A-7400	Needle Bar	Substitution	98. 9	04-001A-7500	
12	B-15		Thrust Ring	Deleted Parts	98. 10	02-007A-7400	
13	D-33-5B	05-017A-8150	Roller Presser Foot(L)	Change of Blue Point	98. 10	81-001A-8260	
14	F-55	09-036A-8570	Rotary Hook Assembly	Substitution	98. 10	09-001A-8270	
15	H-16		Ratchet Button	Deleted Parts	98. 10	06-010C-8270	
16	H-17		Ratchet Button Spring	Deleted Parts	98. 10	06-011G-8270	
17	H-18		E-Ring(φ 4)	Deleted Parts	98. 10	05-014C-1230	
18	H-23		Collar	Deleted Parts	98. 10	80-001A-8270	
19	I-23-2	91-003C-2700	L-Wrench(3MM)	Additional Parts	98. 7		
20	I-23-3	43-010G-3400	Spring for I-23	Additional Parts	98. 7		
21	A-9	01-013S-7400	Screw(11/64" n = 40)	Substitution	99. 3	SC-0179-4125	99. 1/4
22	A-11	SC-0171-4120	Screw(11/64" n = 40)	Substitution	99. 3	SC-0501-4120	
23	A-26	SC-0543-4525	Screw(11/64" n = 40)	Substitution	99. 3	SC-0175-4522	
24	A-28	SC-0543-4525	Screw(11/64" n = 40)	Substitution	99. 3	SC-0175-4522	
25	B-8	SC-A550-4517	Screw(1/4" n = 40)	Substitution	99. 3	SC-0129-4515	
26	E-25	SC-0543-4525	Screw(11/64" n = 40)	Substitution	99. 3	SC-0175-4522	
27	E-35	SC-0514-4515	Screw(15/64" n = 28)	Substitution	99. 3	SC-0507-4515	
28	E-37	SC-A129-4515	Screw(1/4" n = 40)	Substitution	99. 3	SC-0129-4515	
29	E-39	SC-0514-4515	Screw(1/4" n = 40)	Substitution	99. 3	SC-0129-4515	
30	E-52	SC-A308-4517	Screw(15/64" n = 28)	Substitution	99. 3	SC-0317-4517	
31	E-58	SC-0543-4525	Screw(11/64" n = 40)	Substitution	99. 3	SC-0175-4522	
32	F-39	SC-0543-4525	Screw(11/64" n = 40)	Substitution	99. 3	SC-0501-4120	
33	F-46	SC-0543-4525	Screw(11/64" n = 40)	Substitution	99. 3	SC-0142-4122	
34	G-59	SC-0543-4525	Screw(11/64" n = 40)	Substitution	99. 3	SC-0175-4522	
35	I-22	41-101A-1230	Bobbin Winder Ass'y	Substitution	99. 4	41-001A-1230	99. 2/4
36	G-18	06-024S-7400	Screw (3/16" n = 32)	Substitution	99. 4	SC-0173-4118	99. 4/4
37	G-54	44-019M-7400	Felt	Substitution	99. 4	07-003M-7400	
38	G-56	07-003M-7400	Felt	Substitution	99. 4	44-019M-7400	
39	D-33-4	SC-0199-4124	Screw (11/64" n = 40)	Substitution	00. 5	SC-0199-4118	00. 1/4
40	F-33	09-107A-8270	Slide Block	Substitution	01. 01	09-007A-8270	00. 1/4

NOTE)

수정 리스트

Changed Parts List

No.	Ref. No.	Parts No.	Name of Parts	Contents	Date	Old Parts No.	Remarks
41	A-6	SC-0322-7400	Screw(9/64" n = 40)	Substitution	01. 11	SC-0322-2125	
42	A-8	SC-0178-7400	Screw(11/64" n = 40)	Substitution	01. 11	SC-0178-4118	
43	A-11	SC-0171-2302	Screw (11/64" n = 40)	Substitution	01. 11	SC-0171-4120	
44	A-13	SN-0121-7400	Screw(15/64" n = 28)	Substitution	01. 11	SN-0121-4000	
45	A-14	SC-0114-1230	Screw(15/64" n = 28)	Substitution	01. 11	SC-0114-4515	
46	A-16	SC-0502-2302	Screw(9/64" n = 40)	Substitution	01. 11	SC-0502-4125	
47	A-18	SC-0519-2302	Screw(9/64" n = 40)	Substitution	01. 11	SC-0519-2120	
48	A-20	SC-0519-2302	Screw(9/64" n = 40)	Substitution	01. 11	SC-0519-2120	
49	A-22	SC-0519-2302	Screw(9/64" n = 40)	Substitution	01. 11	SC-0519-2120	
50	A-25	SC-0531-2302	Screw(9/64" n = 40)	Substitution	01. 11	SC-0531-4125	
51	A-26	SC-0543-2302	Screw(11/64" n = 40)	Substitution	01. 11	SC-0543-4525	
52	A-28	SC-0543-2302	Screw(11/64" n = 40)	Substitution	01. 11	SC-0543-4525	
53	A-37	SC-0519-2302	Screw(9/64" n = 40)	Substitution	01. 11	SC-0519-2120	
54	A-44	SC-0501-2302	Screw(11/64" n = 40)	Substitution	01. 11	SC-0501-4120	
55	B-1	02-104A-8270	Thread Take-Up Lever	Substitution	01. 11	02-004A-8270	
56	B-3	SC-0507-1230	Screw(15/64" n = 28)	Substitution	01. 11	SC-0507-4515	
57	B-7	01-104P-7400	Needle Bar Crank Shaft	Substitution	01. 11	02-004P-7400	
58	B-11	02-110A-7400	Upper Shaft	Substitution	01. 11	02-101A-7400	
59	B-12	02-105A-7400	Link Cam	Substitution	01. 11	02-005A-7400	
60	B-13	SC-0123-1230	Screw(9/32" n = 28)	Substitution	01. 11	SC-0123-4422	
61	B-14	SC-0124-7400	Screw(9/32" n = 28)	Substitution	01. 11	SC-0124-4522	
62	B-18	SC-0514-7400	Screw(15/64" n = 28)	Substitution	01. 11	SC-0514-4515	
63	B-21	SC-0507-1230	Screw(15/64" n = 28)	Substitution	01. 11	SC-0507-4515	
64	B-29	SC-0150-2500	Screw(15/64" n = 28)	Substitution	01. 11	SC-0150-4122	
65	B-30	SC-0188-1230	Screw(5/16" n = 24)	Substitution	01. 11	SC-0188-4124	
66	C-4	SC-0125-5607	Screw(3/32" n = 56)	Substitution	01. 11	SC-0125-4124	
67	C-6	SC-0110-1230	Screw(15/64" n = 28)	Substitution	01. 11	SC-0110-4115	
68	C-8	SC-0110-1230	Screw(15/64" n = 28)	Substitution	01. 11	SC-0110-4115	
69	C-12	SC-0497-1230	Screw(3/16" n = 28)	Substitution	01. 11	SC-0497-4122	
70	C-17	SC-0160-5607	Screw(9/64" n = 40)	Substitution	01. 11	SC-0160-4125	
71	C-22	04-110A-7400	Needle Bar Rock Shaft	Substitution	01. 11	04-010A-7400	
72	C-23	04-111A-7400	Needle Bar Rock Shaft Bushing(F)	Substitution	01. 11	04-011A-7400	
73	C-24	04-114A-7400	Needle Bar Rock Shaft Bushing(R)	Substitution	01. 11	04-014A-7400	
74	C-26	04-102A-7400	Needle Bar Clamp	Substitution	01. 11	04-002A-7400	
75	C-28	SC-0158-3710	Screw(9/64" n = 40)	Substitution	01. 11	SC-0158-4122	
76	C-32	SC-0116-7400	Screw(3/32" n = 56)	Substitution	01. 11	SC-0116-4120	
77	C-33	04-119A-7400	Needle Bar Rock Shaft Connecting Rod	Substitution	01. 11	04-019A-7400	
78	C-36	SC-0531-2302	Screw(9/64" n = 40)	Substitution	01. 11	SC-0531-4125	
79	C-37	04-101A-8270	Needle Bar Rock Link	Substitution	01. 11	04-001A-8270	
80	C-39	SC-0109-3710	Nut(5/16" n = 24)	Substitution	01. 11	SN-0109-4000	

NOTE)

수정 리스트

Changed Parts List

No.	Ref. No.	Parts No.	Name of Parts	Contents	Date	Old Parts No.	Remarks
81	C-41	SC-0523-7400	Screw(1/4" n=28)	Substitution	01. 11	SC-0253-4118	
82	D-11	SC-0128-7400	Screw(11/64" n=40)	Substitution	01. 11	SC-0128-4118	
83	D-15	SC-0542-1230	Screw(11/64" n=40)	Substitution	01. 11	SC-0542-4515	
84	D-18	05-101A-7400	Flat Presser Bar	Substitution	01. 11	05-001A-7400	
85	D-19	05-102A-7400	Presser Bar Bushing(U)	Substitution	01. 11	05-002A-7400	
86	D-20	SC-0507-1230	Screw(15/64" n=28)	Substitution	01. 11	S-0507-4515	
87	D-21	05-103A-7400	Presser Bar Holder	Substitution	01. 11	05-003A-7400	
88	D-23	05-104A-7400	Presser Bar Lifter Bracket	Substitution	01. 11	05-004A-7400	
89	D-26	SC-0158-3710	Screw(9/64" n=40)	Substitution	01. 11	SC-0158-4122	
90	D-28	SC-0507-1230	Screw(15/64" n=28)	Substitution	01. 11	SC-0507-4515	
91	D-31	SC-0315-2302	Screw(9/64" n=40)	Substitution	01. 11	SC-0315-4122	
92	D-33-4	SC-0199-2700	Screw(11/64" n=40)	Substitution	01. 11	SC-0199-4124	
93	D-33-10	SC-0160-5607	Screw(9/64" n=40)	Substitution	01. 11	SC-0160-4125	
94	D-33-14	SC-0130-1230	Screw(1/8" n=44)	Substitution	01. 11	SC-0130-4122	
95	E-4	SC-0193-1230	Screw(3/16" n=28)	Substitution	01. 11	SC-0193-4122	
96	E-7	06-104A-7400	Feed Regulator	Substitution	01. 11	06-004A-7400	
97	E-10	SC-0507-1230	Screw(15/64" n=28)	Substitution	01. 11	SC-0507-4515	
98	E-13	06-102A-8270	Reverse Lever Shaft	Substitution	01. 11	06-002A-8270	
99	E-14	06-107A-7400	Reverse Lever Shaft Crank	Substitution	01. 11	06-007A-7400	
100	E-15	SC-0330-7400	Screw(15/64" n=28)	Substitution	01. 11	S-0330-4422	
101	E-16	06-117A-7400	Link For Reverse Lever Spring	Substitution	01. 11	06-017A-7400	
102	E-17	SC-0122-1230	Screw (15/64" n=28)	Substitution	01. 11	SC-0122-4522	
103	E-22	SC-0186-1230	Screw (3/16" n=32)	Substitution	01. 11	SC-0186-4118	
104	E-23	SC-0185-1230	Screw (3/16" n=32)	Substitution	01. 11	SC-0185-4124	
105	E-25	SC-0543-2302	Screw (11/64" n=40)	Substitution	01. 11	SC-0543-4525	
106	E-28	SC-0128-7400	Screw (11/64" n=40)	Substitution	01. 11	SC-0128-4118	
107	E-30	SC-0330-7400	Screw (15/64" n=28)	Substitution	01. 11	SC-0330-4422	
108	E-31	06-112A-7500	Pin(B) For E-26	Substitution	01. 11	06-012A-7500	
109	E-32	SC-0542-1230	Screw (11/64" n=40)	Substitution	01. 11	SC-0542-4515	
110	E-33	06-179A-5607	Feed Rock Shaft	Substitution	01. 11	06-079A-5607	
111	E-34	06-143A-7400	Feed Rock Shaft Bushing(F)	Substitution	01. 11	06-043A-7400	
112	E-35	SC-0514-7400	Screw (15/64" n=28)	Substitution	01. 11	SC-0514-4515	
113	E-36	06-142A-7400	Collar For E-33	Substitution	01. 11	06-042A-7400	
114	E-38	06-139A-7400	Feed Rock Shaft Bushing(R)	Substitution	01. 11	06-039A-7400	
115	E-39	SC-0514-7400	Screw (15/64" n=28)	Substitution	01. 11	SC-0514-4515	
116	E-40	06-141A-7400	Feed Rock Shaft Crank	Substitution	01. 11	06-041A-7400	
117	E-41	SC-0253-7400	Screw (1/4" n=28)	Substitution	01. 11	SC-0253-4118	
118	E-43	06-147A-7400	Feed Bar Shaft	Substitution	01. 11	06-047A-7400	
119	E-44	SC-0128-7400	Screw (11/64" n=40)	Substitution	01. 11	SC-0128-4118	
120	E-45	06-106A-8270	Feed Bar	Substitution	01. 11	06-006A-8270	

NOTE)

수정 리스트

Changed Parts List

No.	Ref. No.	Parts No.	Name of Parts	Contents	Date	Old Parts No.	Remarks
121	E-47	SC-0106-7400	Screw(15/64" n = 28)	Substitution	01. 11	SC-0106-4111	
122	E-48	06-152A-7400	Feed Bar Fork	Substitution	01. 11	06-052A-7400	
123	E-50	SC-0531-2302	Screw(9/64" n = 40)	Substitution	01. 11	SC-0531-4125	
124	E-51	06-138A-7400	Feed Cam	Substitution	01. 11	06-038A-7400	
125	E-58	SC-0543-2302	Screw(11/64" n = 40)	Substitution	01. 11	SC-0543-4525	
126	E-59	06-129A-7400	Feed Regulator Shaft	Substitution	01. 11	06-029A-7400	
127	E-61	02-121A-1230	Collar for E-59	Substitution	01. 11	02-021A-1230	
128	E-64	06-137A-7400	Lever Feed Connecting Link	Substitution	01. 11	06-037A-7400	
129	E-68	SC-0549-2302	Screw(1/8" n = 44)	Substitution	01. 11	SC-0549-2125	
130	F-1	09-118A-8170	Post(KM-817, 826)	Substitution	01. 11	09-108A-8170	
131	F-2	09-118A-8270	Post(KM-817, 826)	Substitution	01. 11	09-018A-8270	
132	F-4	SC-0344-8160	Screw(5/16" n = 24)	Substitution	01. 11	SC-0344-4125	
133	F-8	SC-0326-8260	Screw(5/16" n = 24)	Substitution	01. 11	SC-0326-4122	
134	F-12	SC-0365-3710	Screw(9/64" n = 40)	Substitution	01. 11	SC-0365-4118	
135	F-17	SC-0537-8260	Screw(3/16" n = 32)	Substitution	01. 11	SC-0537-4125	
136	F-25	SC-0501-2302	Screw(11/64" n = 40)	Substitution	01. 11	SC-0501-4120	
137	F-27	SC-0179-3710	Screw(11/64" n = 40)	Substitution	01. 11	SC-0179-4125	
138	F-29	SC-0326-8260	Screw(11/64" n = 24)	Substitution	01. 11	SC-0326-4122	
139	F-30	SC-0116-3400	Nut(1/4" n = 40)	Substitution	01. 11	SN-0116-4000	
140	F-37	SC-0115-7400	Nut(3/16" n = 32)	Substitution	01. 11	SN-0115-4000	
141	F-39	SC-0543-2302	Screw(11/64" n = 24)	Substitution	01. 11	SC-0543-4525	
142	F-46	SC-0543-2302	Screw(1/8" n = 44)	Substitution	01. 11	SC-0543-4525	
143	F-53	SC-0310-8130	Screw(9/64" n = 40)	Substitution	01. 11	SC-0310-4119	
144	F-54	09-113A-8270	Hook Shaft	Substitution	01. 11	08-013S-8270	
145	F-57	SC-0147-8270	Screw(9/64" n = 40)	Substitution	01. 11	SC-0147-4114	
146	F-58	SC-130A-7400	Bobbin	Substitution	01. 11	09-030A-7400	
147	F-61	09-114A-8270	Opener	Substitution	01. 11	09-014A-8270	
148	F-63	09-116A-8270	Fork for F-61	Substitution	01. 11	09-016A-8270	
149	F-64	SC-0502-2302	Screw(9/64" n = 40)	Substitution	01. 11	SC-0502-4125	
150	G-2	SC-0502-2302	Screw(9/64" n = 40)	Substitution	01. 11	SC-0502-4125	
151	G-10	SC-0502-2302	Screw(9/64" n = 40)	Substitution	01. 11	SC-0502-4125	
152	G-13	SC-0531-2302	Screw(9/64" n = 40)	Substitution	01. 11	SC-0531-4125	
153	G-26	SC-0518-7400	Screw(9/64" n = 40)	Substitution	01. 11	SC-0518-4119	
154	G-30	SC-0531-2302	Screw(9/64" n = 40)	Substitution	01. 11	SC-0531-4125	
155	G-34	SC-0531-2302	Screw(9/64" n = 40)	Substitution	01. 11	SC-0531-4125	
156	G-38	SC-0531-2302	Screw(9/64" n = 40)	Substitution	01. 11	SC-0531-4125	
157	G-42	SC-0531-2302	Screw(9/64" n = 40)	Substitution	01. 11	SC-0531-4125	
158	G-44	SC-0531-2302	Screw(9/64" n = 40)	Substitution	01. 11	SC-0531-4125	
159	G-50	SC-0531-2302	Screw(9/64" n = 40)	Substitution	01. 11	SC-0531-4125	
160	G-52	SC-0531-2302	Screw(9/64" n = 40)	Substitution	01. 11	SC-0531-4124	

NOTE)

수정 리스트

Changed Parts List

No.	Ref. No.	Parts No.	Name of Parts	Contents	Date	Old Parts No.	Remarks
161	G-59	SC-0543-2302	Screw(11/64" n = 40)	Substitution	01. 11	SC-0543-4525	
162	H-1	07-101A-8270	Lower Shaft	Substitution	01. 11	07-001A-8270	
163	H-2	07-102A-8270	Lower Shaft Bushing(F)	Substitution	01. 11	07-002A-8270	
164	H-4	SC-0507-1230	Screw(15/64" n = 28)	Substitution	01. 11	SC-0507-4515	
165	H-10	07-103A-8270	Lower Shaft Bushing(M)	Substitution	01. 11	07-003A-8270	
166	H-12	SC-0507-1230	Screw(15/64" n = 28)	Substitution	01. 11	SC-0507-4515	
167	I-10	SC-0118-7400	Screw(1/4" n = 24)	Substitution	01. 11	SC-0118-4119	
168	I-11	09-130A-7400	Bobbin	Substitution	01. 11	09-030A-7400	
169	C-11	04-103A-8260		Substitution	03. 02	04-003A-8260	03. 1/4
170	C-2	04-101A-7500		Substitution	03. 06	04-101A-7500	03. 2/4
171	E-54	06-135A-7400		Substitution	03. 06	06-035A-7400	03. 2/4
172	I-16	91-102C-1230		Substitution	03. 06	91-002C-1230	03. 2/4
173	I-17	91-103C-1230		Substitution	03. 06	91-003C-1230	03. 2/4
174	H-8	06-054C-5700		Change of Blue Point	03. 08	07-005A-7400	03. 3/4
175							
176							
177							
178							
179							
180							
181							
182							
183							
184							
185							
186							
187							
188							
189							
190							
191							
192							
193							
194							
195							
196							
197							
198							
199							
200							

NOTE)